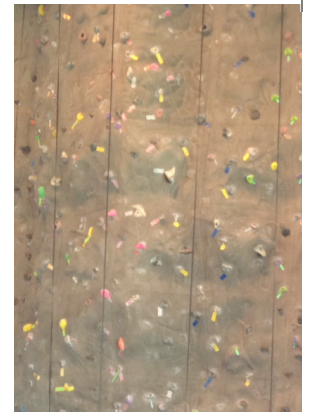
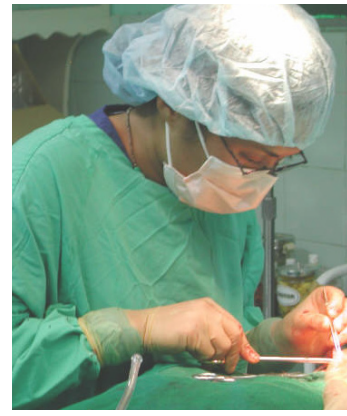


CHURCH HEALTH SCHOLARS

*A Faith-and-Health
Immersion Program
in Memphis, TN*



CHURCH HEALTH CENTER



Overview

Join recent college graduates on a one-year journey to explore health care in a faith-based setting. Since 1987, the Church Health Center has sought to reclaim the Church's biblical commitment to care for bodies and spirits. The Center aims to provide its Scholars with thoughtful and thought-provoking work experiences as they assist in serving underserved people in Memphis. The program has graduated more than 250 Scholars, many of whom have gone on to medical school, dental school, and nonprofit careers.

Who are Scholars?

Scholars are recent college graduates (up to three years out of college) with an interest in health care and a passion to serve Memphis' uninsured populations.

What does a Scholar year look like?

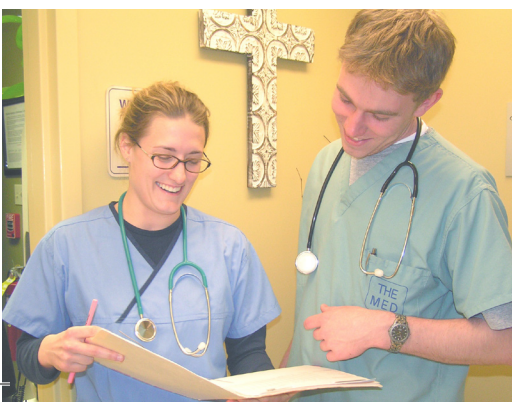
Your Scholar year starts June 1, 2015. Surrounded by a tight-knit community of 20 to 30 other Scholars, you will explore and address health care issues in Memphis. In the Center's medical and dental clinics, Health Care Track Scholars experience a medical setting on a daily basis, while Scholars in the Nonprofit and Wellness & Community tracks join departments like Development, Communication and Wellness Education.

In addition to daily work, Scholars are offered invaluable learning experiences, like guest lectures, local hospital tours, individual mentors, and more. You will also have the opportunity to work on a personal project that highlights your interests, strengths, and skills.

Tracks available

Taking care of our community requires doctors and nurses, but it also requires people like wellness educators, health administrators, videographers, and designers. Church Health Scholars offers applicants three program tracks to choose from—Health Care, Nonprofit, and Wellness & Community.

- Applying or reapplying to medical, dental or nursing school, or discerning if medical work is right for you? The **Health Care Track** is for applicants interested in careers in the medical field.
- Pursuing a nonprofit career? The **Nonprofit Track** is for applicants curious about the administrative side of a health care organization.
- Care about promoting community wellness? The **Wellness & Community Track** is for applicants who want to help Memphis take steps to become a healthier community through wellness education, physical therapy, and more.





Benefits

As a Scholar, you are a full-time, hourly staff member at the Center and will receive a full benefits package that includes health insurance, vacation days, and a free membership to Wellness, which includes access to exercise equipment, health classes, and cooking demos. Each Scholar also has the opportunity to sign up for the Scholars Mentorship Program to be paired with a local business or medical professional.

Applying & Deadlines

The Center accepts online applications for the 2015-16 Scholar class October 1 through January 15. Final decisions will be made by April 2015 and Scholars will start June 2015. Read about the different Center departments and submit an application at churchhealthcenter.org/chscholars.

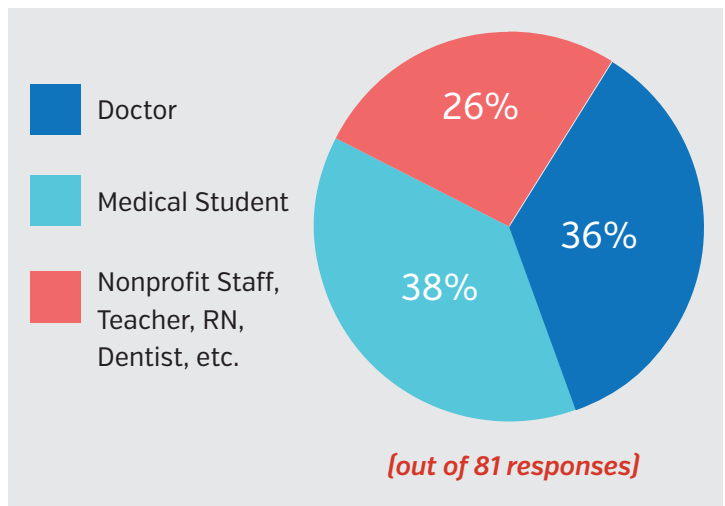
Required application documents:

- An up-to-date resume that includes your education, work, and community service experience.
- A one-page cover letter that explains your interest in the Church Health Center Scholars Program.
- Two references—one professional and one academic is suggested. Each reference must send a letter of recommendation to scholars@churchhealthcenter.org. No personal references (family or friends), please.

Contact

Krystal Grant-Crutchfield is the Coordinator of Contextual Education. Her email is scholars@churchhealthcenter.org.

Job Breakdown of Past Scholars



Please note: the Church Health Center is unable to return individual emails or phone calls regarding the status of your application. You will be contacted if you have been selected for an interview. Final decisions will be made by April 2015.



87% *of participants' career decisions were greatly or moderately affected by the program*

"The program gave me on-the-ground experience in the ways a non-profit works from direct services to fundraising."

-John S., Nonprofit Staff Member, 2003-04 class

"I realized the great need for even basic awareness of personal/preventative healthcare needs by the population served."

-James S., Biomedical Engineer, 2005-06, 2006-07 classes

"Health disparities would have been lower on my list had I not worked at the [Church Health Center]. It was eye-opening and has changed how I approach medicine regarding what I want to get out of it personally/professionally and what I want to contribute to society."

-Elliot C., Student, 2011-12 class

"I want to find ways that I can really live out the mission of my faith."

-Caroline L., Current Scholar, 2014-15 class

"Having the experience at [Church Health Center] helps me remember that there are people in my city practicing with a broader goal than just seeing their list of patients each day." -Elizabeth G., Medical Student, 2009-10 class

"This experience helped to shape my viewpoint of how physicians should approach patient care." -Dr. Menachem L., Doctor, 2003-04 class



Church Health Center
1210 Peabody Avenue
Memphis, TN 38104